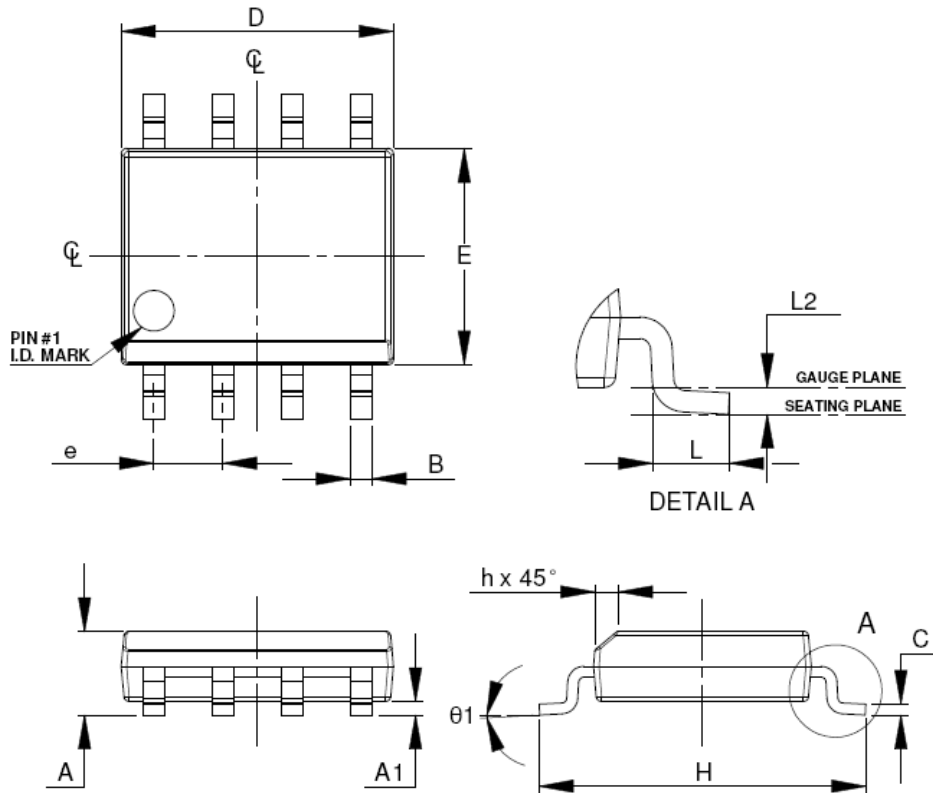


Package Information – SOP-8

8-lead Surface Mounted Package

Mechanical Case Outline

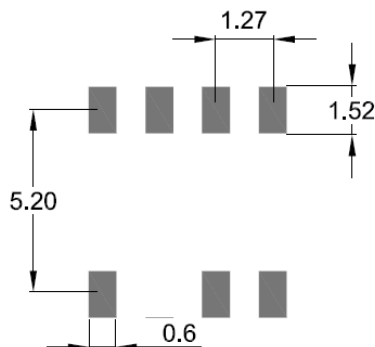


Notes

1. Lead finish is 8-23 microns thickness of matt Sn.
2. Lead width and thickness exclusive of plating thickness.
3. Package outline is exclusive of any mould flasher and additional protrusions.
4. Pin 1 located by the notch. Pin numbering is anti-clockwise as viewed from above.
5. All dimensions are in millimetres.

A	A1	B	C	D	E	e	H	h	L	L2	$\theta 1$
1.35 to 1.75	0.05 to 0.25	0.31 to 0.51	0.17 to 0.25	4.80 to 5.00	3.80 to 4.00	1.27 BSC	5.80 to 6.20	0.25 to 0.50	0.40 to 1.27	0.25 BSC	0° to 8°

Soldering Footprint

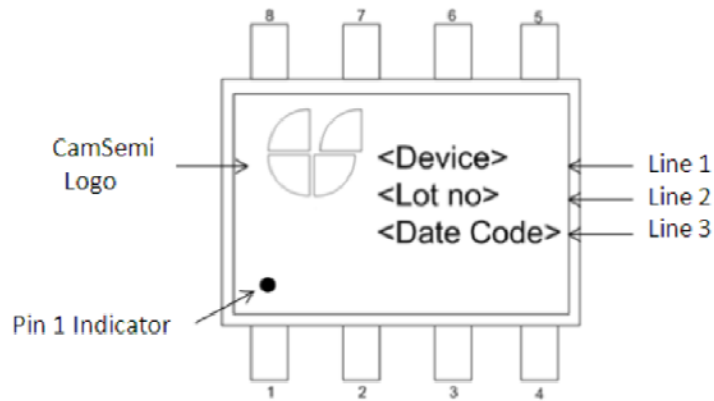


Notes

1. Pin 2 should not have a solder pad or track running underneath.

Package Information – SOP-8

Package Marking



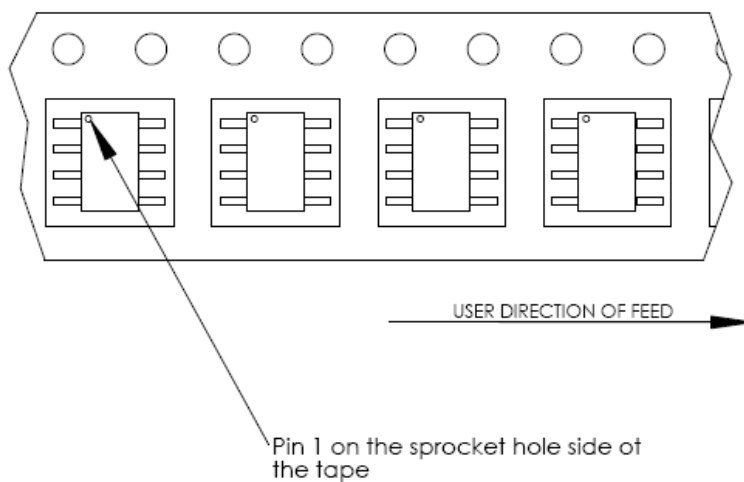
Notes:

- 1) Top Laser Mark only.
- 2) Marking Convention
 - a. First Line: Device Type
 - b. Second Line: Lot number
 - c. Third Line: Date Code

Tape and Reel Information

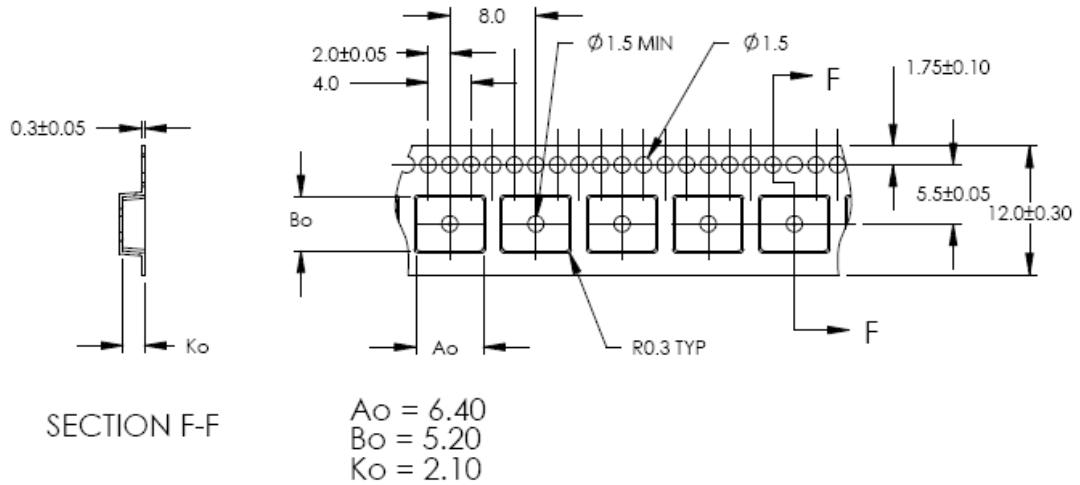
Tape Width (mm)	Reel Size (inches)	No. of Components	No of Leader Pockets	No of Trailer Pockets	Tape Option Indicator
12	13	3000	50	50	TR13

Orientation

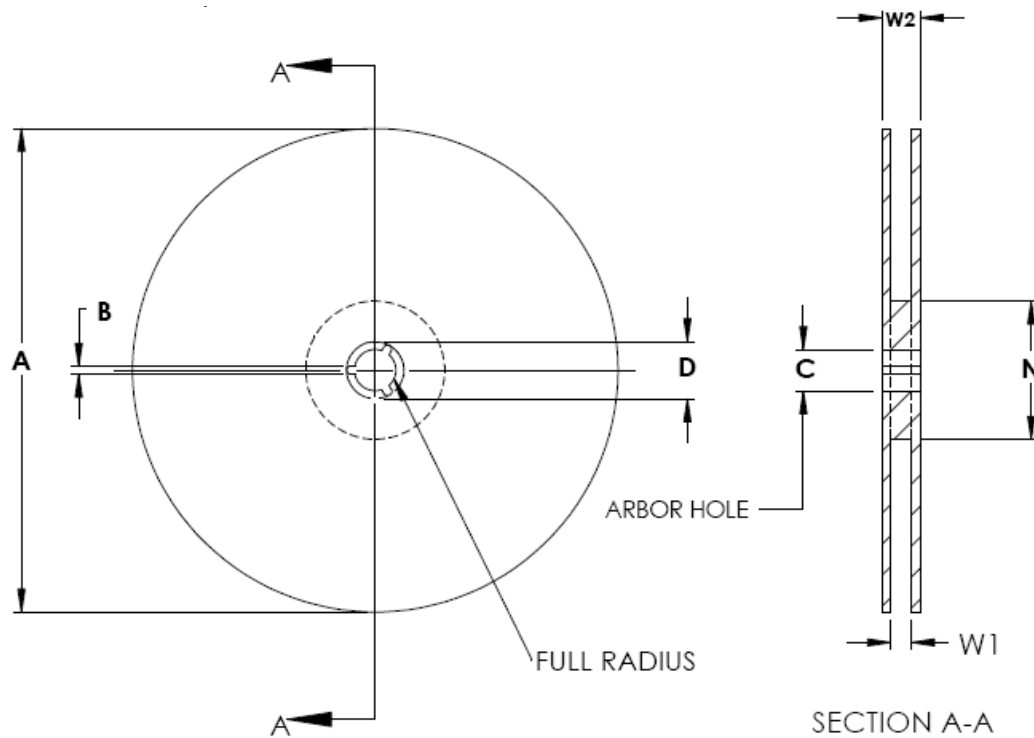


Package Information – SOP-8

Carrier Tape Drawing



Reel Configuration



Tape Option	A	B	C	D	N	W1	W2
TR13	330.0±4.0	1.5 min	13.0±0.5	20.2 min	100.0±2.0	12.4 to 16.4	18.4 max

All dimensions are in millimetres