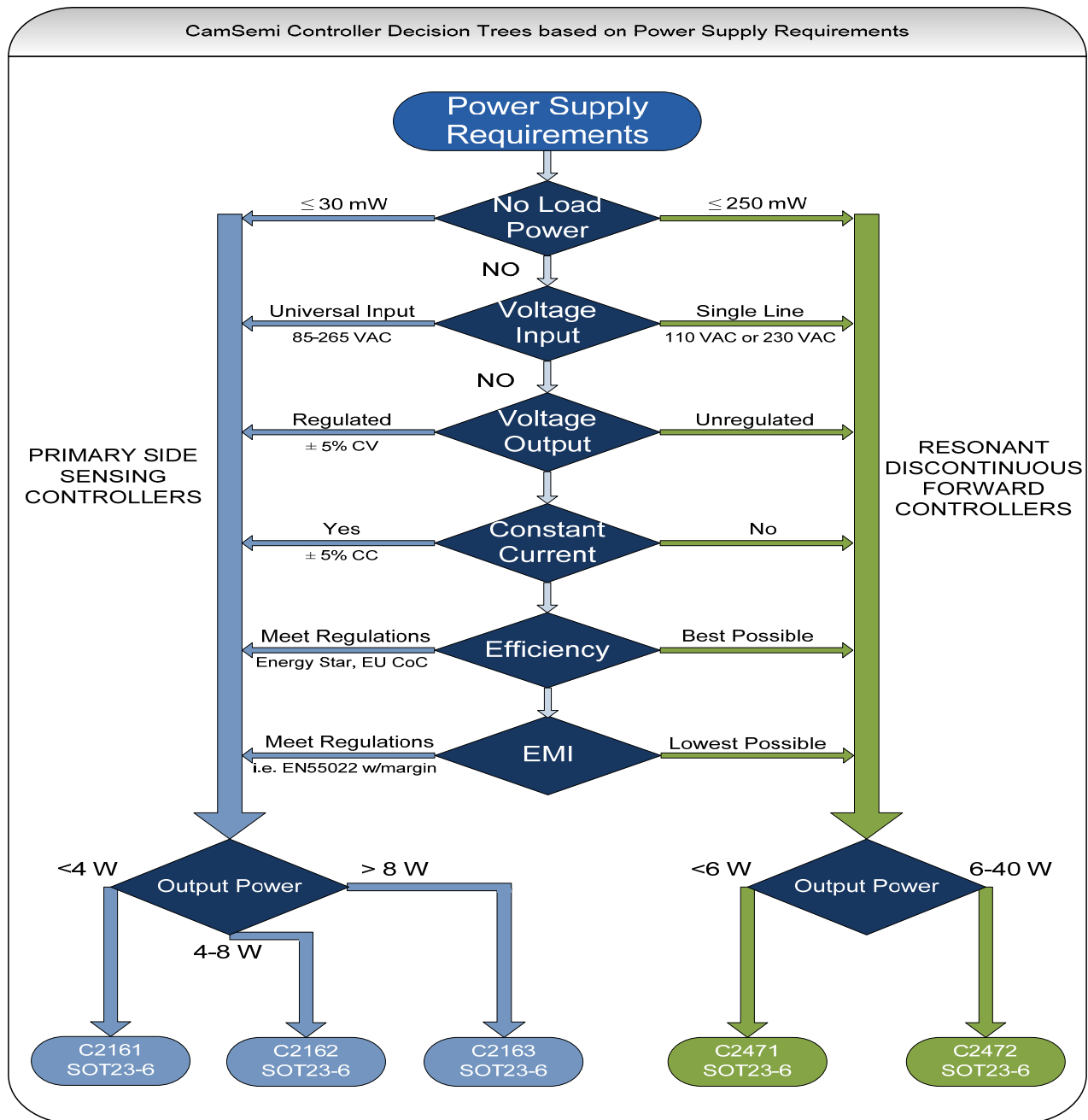




## Choosing the correct CamSemi controller



### For more Information

For details of our channel partners and information on future product, technology or corporate announcements, visit [www.camsemi.com](http://www.camsemi.com)

### Contact Information

#### European Design Centre

CamSemi  
St Andrews House  
St Andrews Road  
Cambridge, CB4 1DL  
United Kingdom

Tel: +44 1223 446450

#### Taiwan Design Centre

CamSemi  
6F, No.58, Zhouzi St.,  
Neihu District,  
Taipei City 114,  
Taiwan (R.O.C.)

Tel: +886 2 8178 1010

#### China Design Centre

Room 201, 2F  
Shenzhen Academy of  
Aerospace Technology,  
Tower B, 10<sup>th</sup> Kejinan Rd.  
Nanshan District,  
Shenzhen, China 518057

Tel: +86 755 8611 7778

#### Korea Design Centre

No. 808 KOFOMO Tower,  
16-2 Sunae-Dong, Bundang-GU,  
Sungnam-Si, Kyunggi-Do,  
463-825,  
SOUTH KOREA

Tel: +82 31 711 1415