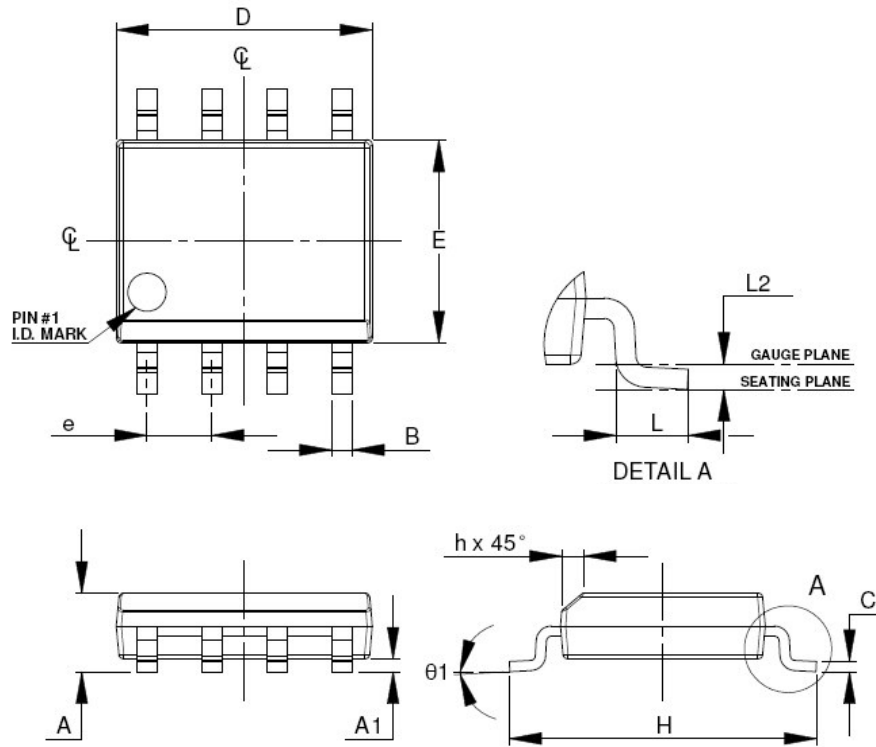


Package Information – SOP-8

8-lead Surface Mounted Package
Mechanical Case Outline

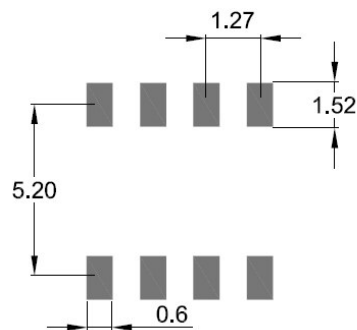


Notes

1. Lead finish is 8-23 microns thickness of matt Sn.
2. Lead width and thickness exclusive of plating thickness.
3. Package outline is exclusive of any mould flasher and additional protrusions.
4. Pin 1 located by the notch. Pin numbering is anti-clockwise as viewed from above.
5. Moisture Sensitivity Level 1.
6. All dimensions are in millimetres.

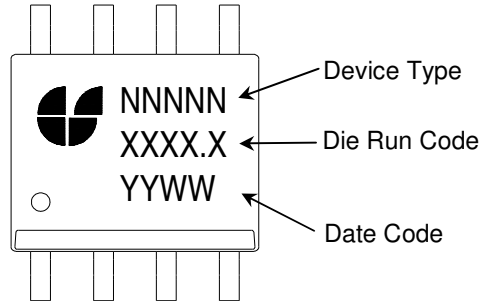
A	A1	B	C	D	E	e	H	h	L	L2	θ1
1.35 to 1.75	0.05 to 0.25	0.31 to 0.51	0.17 to 0.25	4.80 to 5.00	3.80 to 4.00	1.27 BSC	5.80 to 6.20	0.25 to 0.50	0.40 to 1.27	0.25 BSC	0° to 8°

Soldering Footprint



Package Information – SOP-8

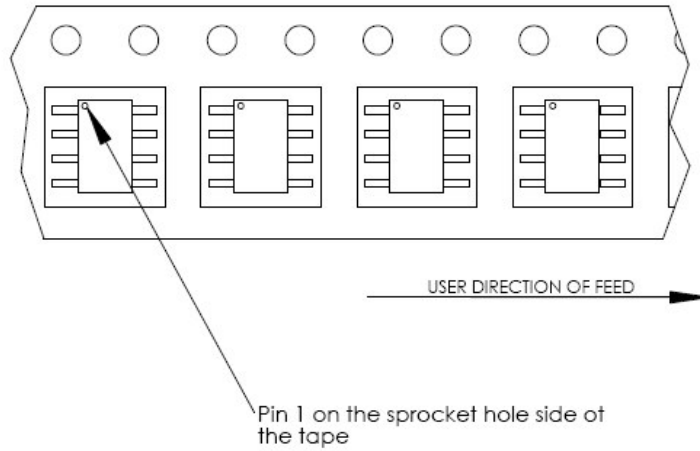
Package Marking



Tape and Reel Information

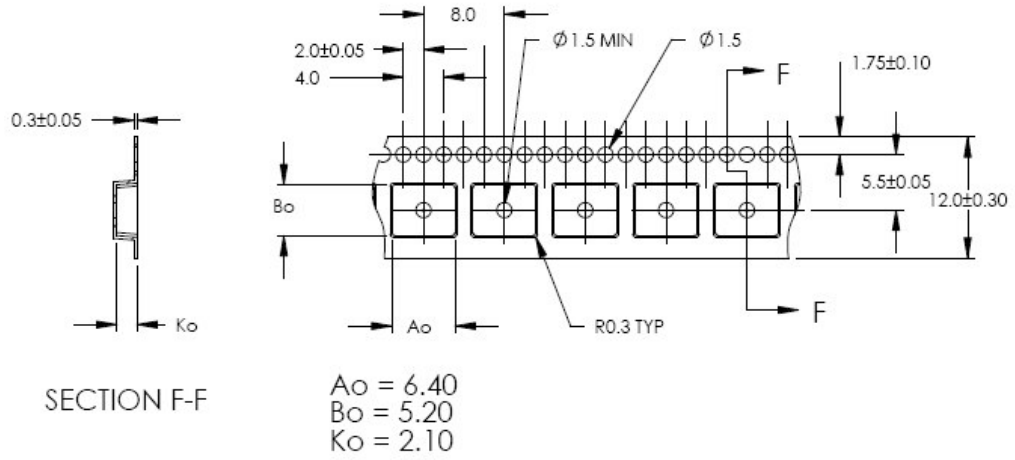
Tape Width (mm)	Reel Size (inches)	No. of Components	No of Leader Pockets	No of Trailer Pockets	Tape Option Indicator
12	7	500	50	50	TR7
12	13	2,500	50	50	TR13

Orientation

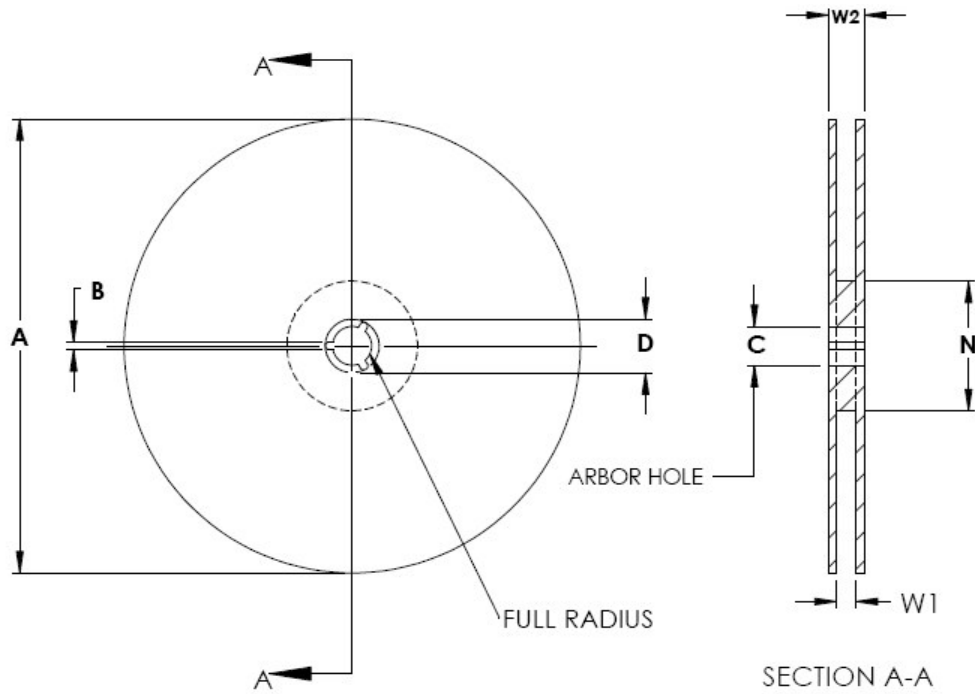


Package Information – SOP-8

Carrier Tape Drawing



Reel Configuration



Tape Option	A	B	C	D	N	W1	W2
TR7	179.0±1.0	1.5 min	13.0±0.5	20.2 min	55.0±0.5	12.4 to 16.4	18.4 max
TR13	330.0±4.0				100.0±2.0		

All dimensions are in millimetres