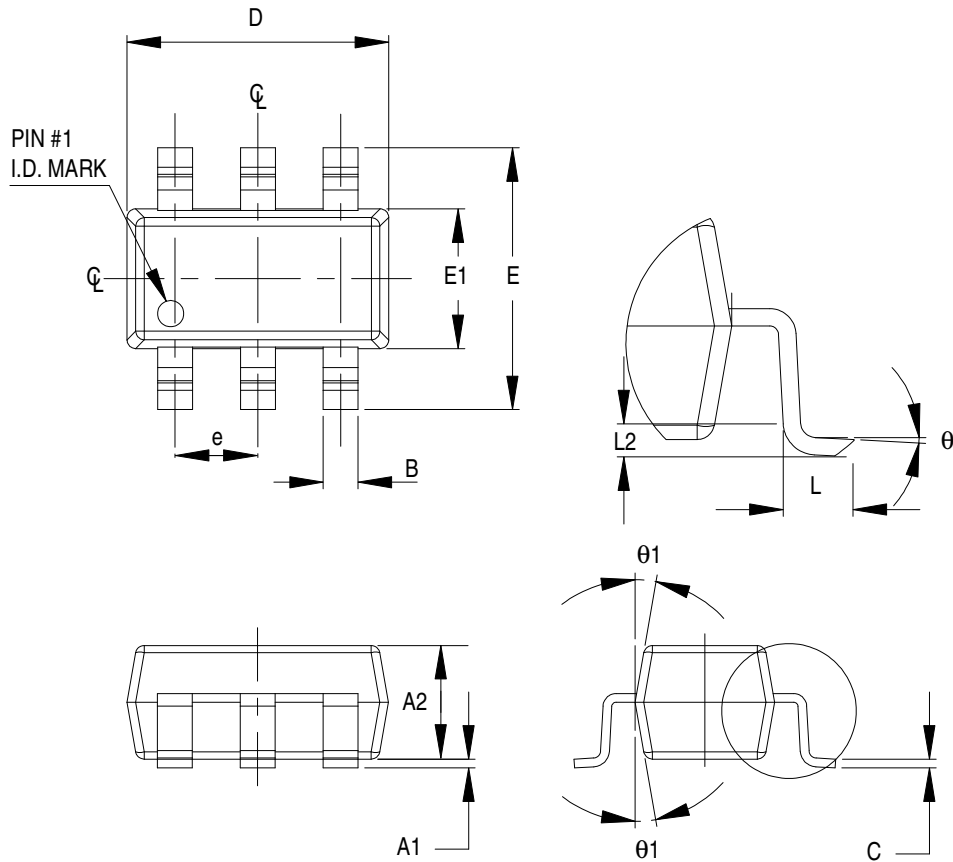


Package Information – SOT23-6

6-lead Surface Mounted Package

Mechanical Case Outline

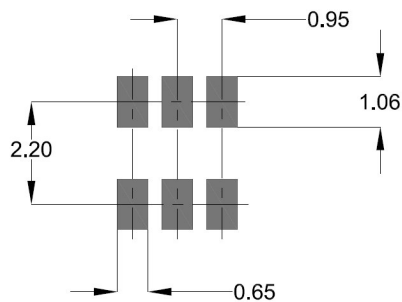


Notes

1. Lead finish is 8-23 microns of matt Sn.
2. Lead width and thickness exclusive of plating thickness.
3. Package outline is exclusive of any mould flashes and additional protrusions.
4. Moisture Sensitivity Level 1.
5. All dimensions are in millimetres.

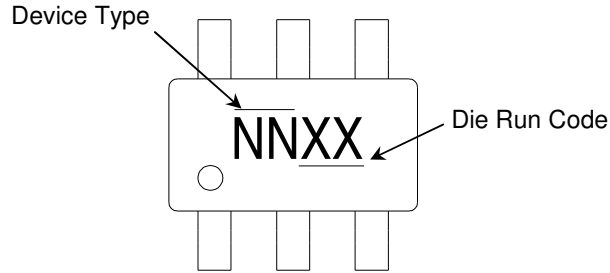
A1	A2	B	C	D	e	E	E1	L	L2	T	θ	θ1
0.05 to 0.15	0.90 to 1.30	0.35 to 0.50	0.08 to 0.22	2.76 to 3.04	0.95 TYP	2.60 to 3.00	1.46 to 1.74	0.35 to 0.60	0.25 BSC	1.00 to 1.30	0° to 80°	5° to 15°

Soldering Footprint



Package Information – SOT23-6

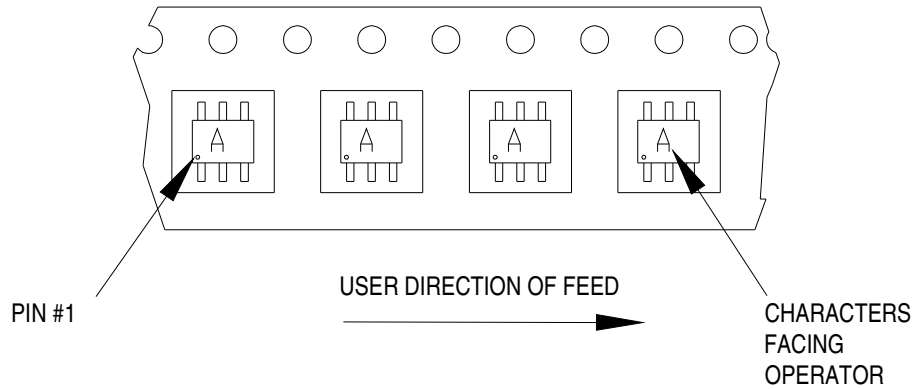
Package Marking



Tape and Reel Information

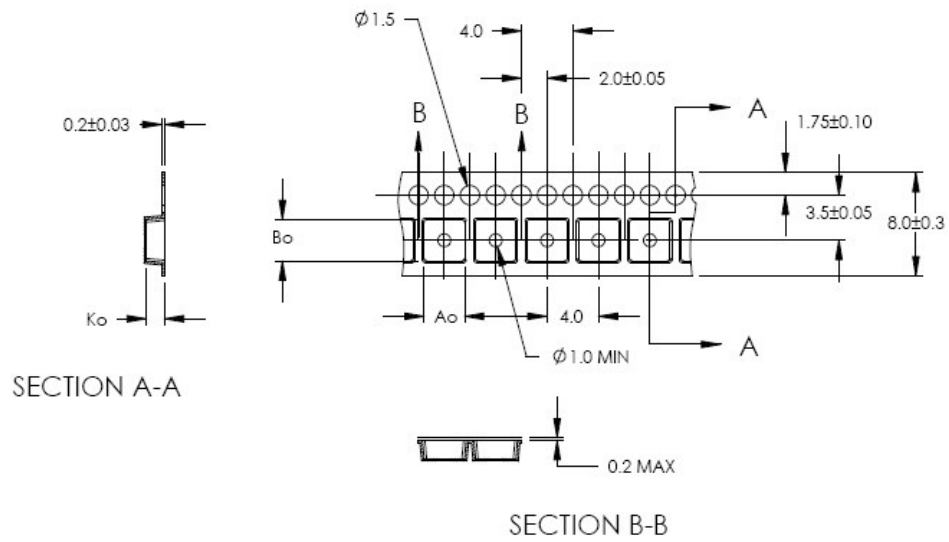
Tape Width (mm)	Reel Size (inches)	No. of Components	No of Leader Pockets	No of Trailer Pockets	Tape Option Indicator
8	7	3,000	100	100	TR7
8	13	10,000	100	100	TR13

Orientation

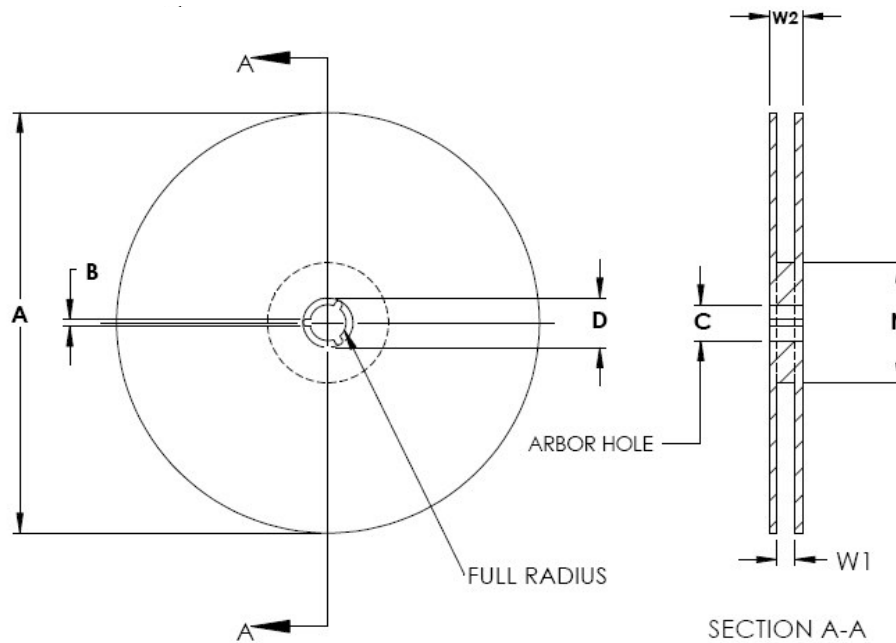


Package Information – SOT23-6

Carrier Tape Drawing



Reel Configuration



Tape Option	A	B	C	D	N	W1	W2
TR7	179.0 \pm 1.0	1.5	13.0 \pm 0.5	20.2	55.0 \pm 0.5	8.4 to 9.9	14.4
TR13	330.0 \pm 4.0	min		min	100.0 \pm 2.0		max

All dimensions are in millimetres